



IRWELL HOUSE

WATERHOUSE GARDENS

FLOORPLATE Level 1-22



A11 - Type A1.01	Metric	Imperial
Living/ Kitchen	7.69m x 3.57m	25.22ft x 11.7ft
Bedroom 1	3.29m x 3.51m	10.79ft x 11.51ft
Total	50.0m ²	538.20ft ²

A12 - Type A2.01	Metric	Imperial
Living/ Kitchen	6.02m x 7.71m	19.75ft x 25.33ft
Bedroom 1	3.3m x 3.67m	10.83ft x 12.04ft
Bedroom 2	2.98m x 3.51m	9.78ft x 11.52ft
Total	70.4m ²	757.48ft ²

A13 - Type A2.02	Metric	Imperial
Living/ Kitchen	7.71m x 5.74m	25.29ft x 18.83ft
Bedroom 1	3.65m x 3.28m	11.98ft x 10.76ft
Bedroom 2	3.65m x 2.79m	11.98ft x 9.15ft
Total	70.3m ²	756.70ft ²

A14 - Type A2.03	Metric	Imperial
Living/ Kitchen	6.30m x 4.45m	20.67ft x 14.56ft
Bedroom 1	4.23m x 3.28m	13.88ft x 10.76ft
Bedroom 2	3.03m x 4.10m	9.94ft x 13.45ft
Total	70.1m ²	754.55ft ²

A15 - Type A2.04	Metric	Imperial
Living/ Kitchen	7.61m x 3.32m	24.97ft x 10.89ft
Bedroom 1	3.11m x 3.65m	10.20ft x 11.98ft
Bedroom 2	5.50m x 2.41m	18.04ft x 7.91ft
Total	70.1m ²	754.55ft ²

A16 - Type A2.05	Metric	Imperial
Living/ Kitchen	7.71m x 3.71m	25.33ft x 12.18ft
Bedroom 1	5.85m x 2.72m	19.19ft x 8.93ft
Bedroom 2	3.60m x 2.72m	11.81ft x 8.92ft
Total	70.2m ²	755.6265ft ²

A17 - Type A1.02	Metric	Imperial
Living/ Kitchen	7.71m x 2.97m	25.33ft x 9.77ft
Bedroom 1	3.26m x 2.98m	10.70ft x 9.78ft
Total	40.4m ²	434.86ft ²

A18 - Type A2.06	Metric	Imperial
Living/ Kitchen	7.21m x 4.05m	23.65ft x 13.29ft
Bedroom 1	4.95m x 3.96m	16.24ft x 12.99ft
Bedroom 2	3.22m x 2.98m	10.56ft x 9.78ft
Total	69.8m ²	751.32ft ²

Unit Type

	1 Bed
	2 Bed
	3 Bed

KEY

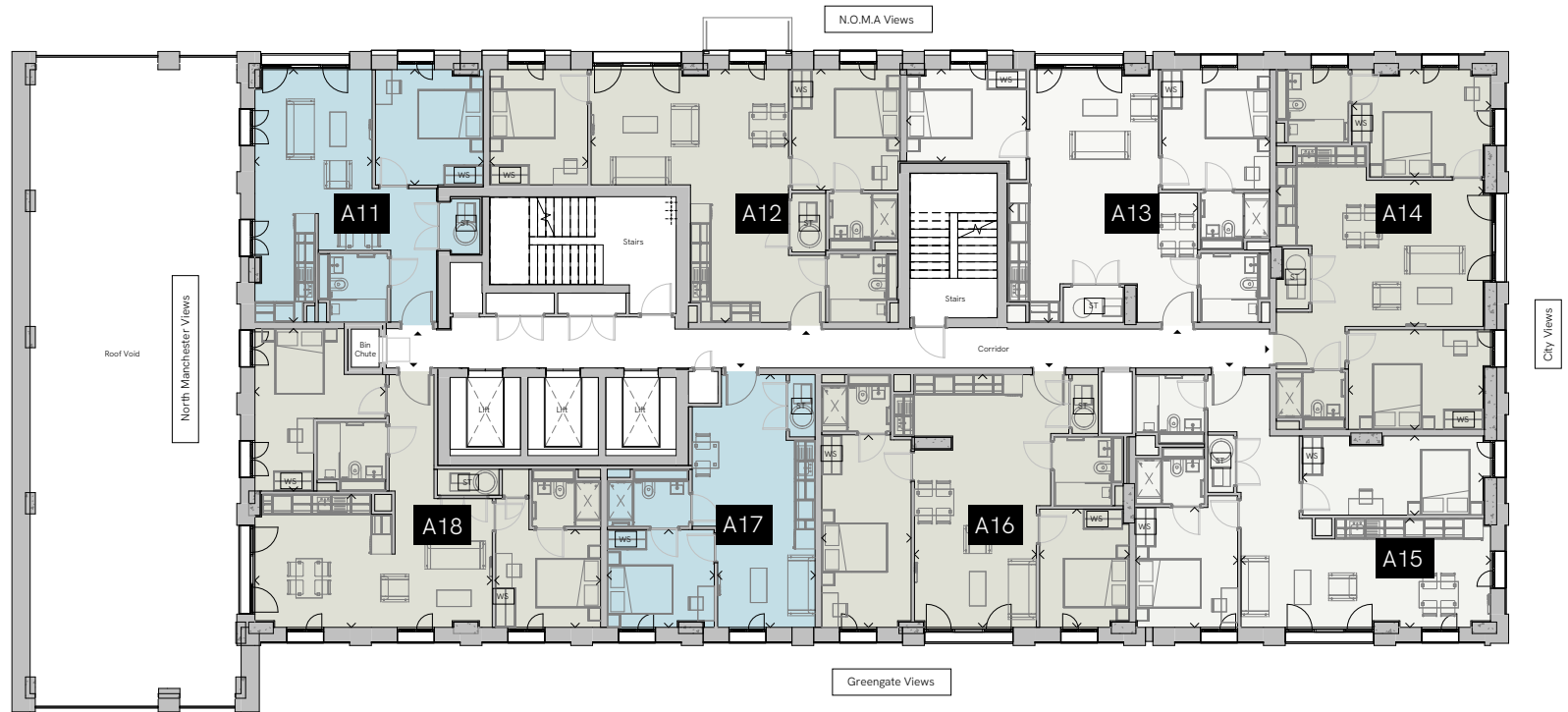
	Wardrobe Space
	Store Cupboard/ Water Cylinder

Apartment Locator

How to identify your apartment number

Block	Level	Unit	=	Postal Number
A	1	1	=	A11
A	23	2	=	A232

DUTTON STREET



LEVEL



Site Plan



All dimensions are taken approximately from the middle of the room (< ->). Each layout may vary. All measurements may vary within the tolerance percentage agreed. The dimensions are not intended for use for carpet/flooring sizes, appliances or furniture. Kitchen layouts indicative only and may be subject to change. Specification and finishes are subject to change if materials and appliances are discontinued or not readily available. Please ask Sales Consultant for further information.

FLOORPLATE
Level 23

A231 - Type A4.01
Living 6.60m x 5.72m 21.65ft x 18.77ft
Kitchen 8.93m x 4.82m 29.29ft x 15.81ft
Total 113.4m² 1,220.63ft²

A232 - Type A4.02
Living/ Kitchen 20.77m x 7.70m 68.14ft x 25.26ft
Total 112.3m² 1,208.78ft²

A233 - Type A4.03
Living/ Kitchen 13.35m x 7.71m 43.80ft x 25.33ft
Total 99.3m² 1,068.87ft²



DUTTON STREET



Unit Type

- 1 Bed
- 2 Bed
- 3 Bed

KEY

- WS Wardrobe Space
- ST Store Cupboard/
Water Cylinder

Apartment Locator

How to identify your apartment number

Block	Level	Unit	=	Postal Number
A	1	1	=	A11
A	23	2	=	A232

LEVEL



Site Plan



All dimensions are taken approximately from the middle of the room (< >). Each layout may vary. All measurements may vary within the tolerance percentage agreed. The dimensions are not intended for use for carpet/flooring sizes, appliances or furniture. Kitchen layouts indicative only and may be subject to change. Specification and finishes are subject to change if materials are discontinued or not readily available. Please ask Sales Consultant for further information.

FLOORPLATE

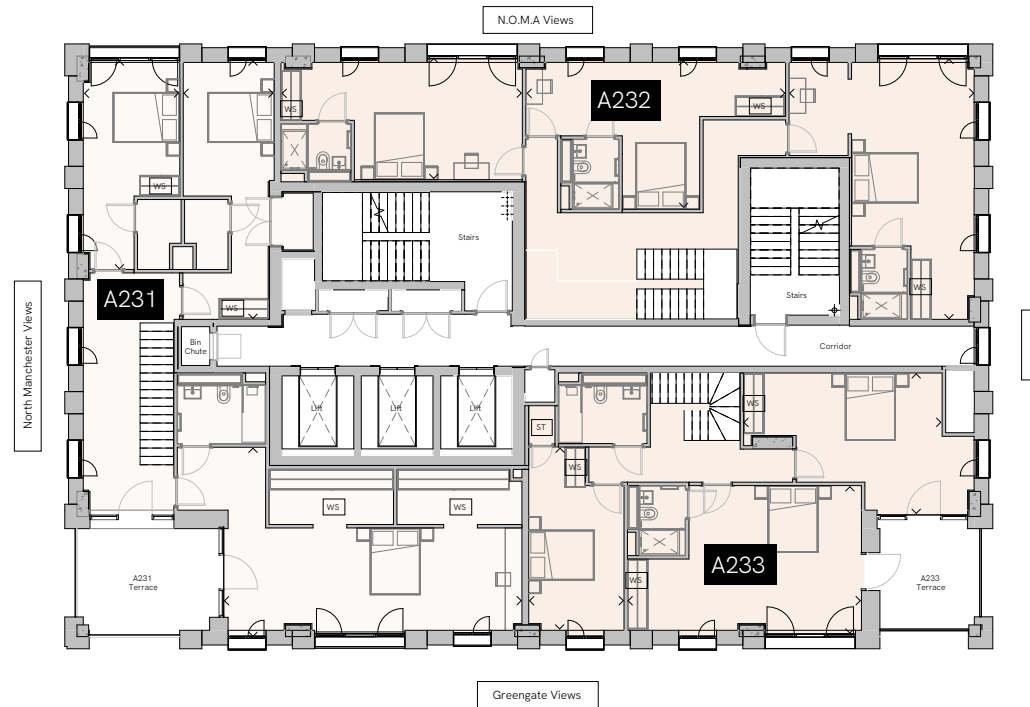
Level 24

A231 - Type A4.01	Metric	Imperial
Bedroom 1	8.94m x 5.67m	29.33ft x 18.64ft
Bedroom 2	7.69m x 2.73m	25.23ft x 8.96ft
Bedroom 3	6.26m x 2.89m	20.54ft x 9.48ft
Total	113.22m ²	1,218.69ft ²

A232 - Type A4.02	Metric	Imperial
Bedroom 1	7.81m x 5.55m	25.62ft x 18.21ft
Bedroom 2	7.79m x 4.47m	25.56ft x 14.70ft
Bedroom 3	7.23m x 3.62m	23.72ft x 11.88ft
Total	112.37m ²	1,209.54ft ²

A233 - Type A4.03	Metric	Imperial
Bedroom 1	7.01m x 4.45m	23.00ft x 14.60ft
Bedroom 2	5.96m x 4.26m	19.55ft x 13.99ft
Bedroom 3	5.49m x 2.60m	18.01ft x 9.42ft
Total	88.29m ²	950.34ft ²

DUTTON STREET



Unit Type

	1 Bed
	2 Bed
	3 Bed

KEY

	Wardrobe Space
	Store Cupboard/ Water Cylinder

Apartment Locator

How to identify your apartment number

Block	Level	Unit	=	Postal Number
A	1	1	=	A11
A	23	2	=	A232

LEVEL



Site Plan



All dimensions are taken approximately from the middle of the room (< >). Each layout may vary. All measurements may vary within the tolerance percentage agreed. The dimensions are not intended for use for carpet/flooring sizes, appliances or furniture. Kitchen layouts indicative only and may be subject to change. Specification and finishes are subject to change if materials and appliances are discontinued or not readily available. Please ask Sales Consultant for further information.

FLOORPLATE

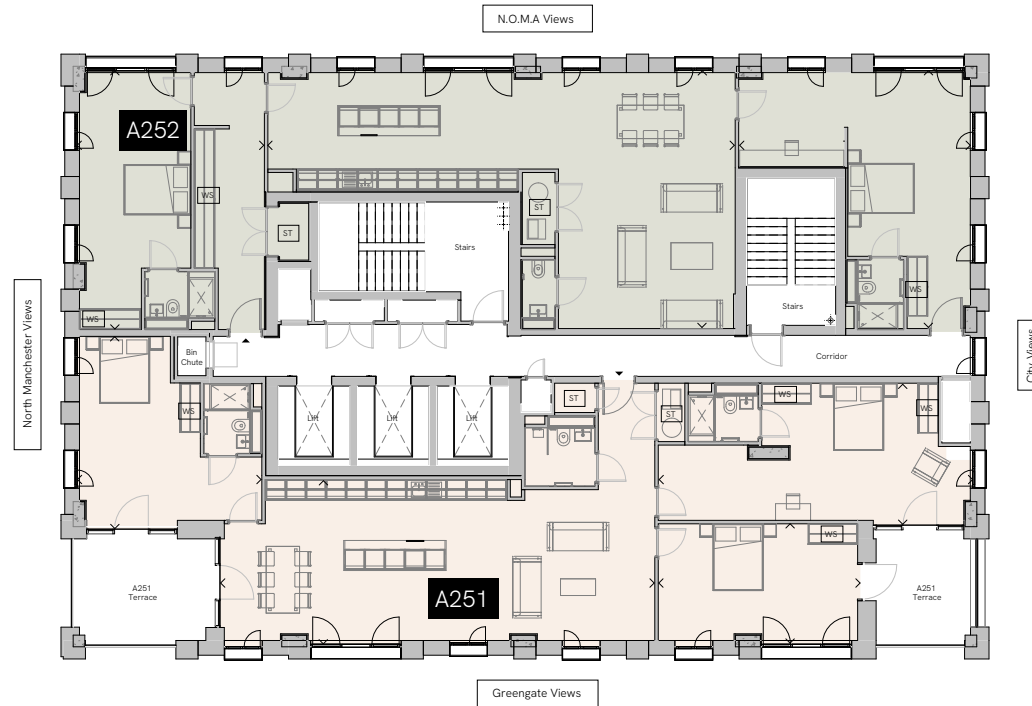
Level 25

A11 - Type A3.01	Metric	Imperial
Living/ Kitchen	14.00m x 7.67m	45.93ft x 25.19ft
Bedroom 1	7.73m x 6.94m	25.36ft x 22.74ft
Bedroom 2	7.76m x 5.61m	25.46ft x 18.41ft
Total	155.8m ²	1,677.01ft ²

A12 - Type A2.07	Metric	Imperial
Living/ Kitchen	13.02m x 4.94m	42.73ft x 16.21ft
Bedroom 1	9.42m x 4.26m	30.91ft x 13.99ft
Bedroom 2	5.78m x 5.53m	18.96ft x 18.14ft
Bedroom 3	5.97m x 3.61m	19.59ft x 11.84ft
Total	157.9m ²	1,699.62ft ²



DUTTON STREET



Unit Type

- 1 Bed
- 2 Bed
- 3 Bed

KEY

- WS Wardrobe Space
- ST Store Cupboard/
Water Cylinder

Apartment Locator

How to identify your apartment number

Block	Level	Unit	=	Postal Number
A	1	1	=	A11
A	23	2	=	A232

LEVEL

- 24
- 23
- 22
- 21
- 20
- 19
- 18
- 17
- 16
- 15
- 14
- 13
- 12
- 11
- 10
- 09
- 08
- 07
- 06
- 05
- 04
- 03
- 02
- 01
- 0
- B1

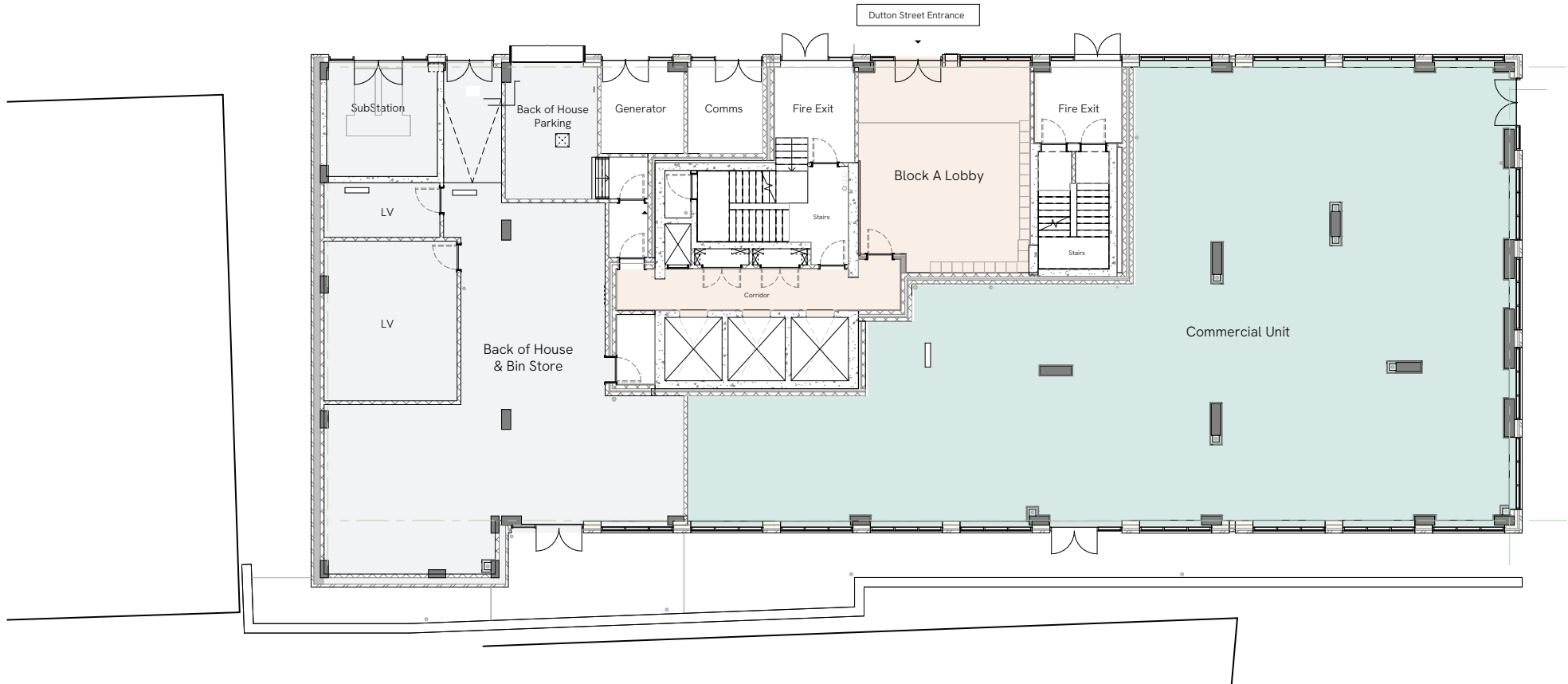
Site Plan



All dimensions are taken approximately from the middle of the room (< ->). Each layout may vary. All measurements may vary within the tolerance percentage agreed. The dimensions are not intended for use for carpet/flooring sizes, appliances or furniture. Kitchen layouts indicative only and may be subject to change. Specification and finishes are subject to change if materials and appliances are discontinued or not readily available. Please ask Sales Consultant for further information.



DUTTON STREET



LEVEL

25
24
23
22
21
20
19
18
17
16
15
14
13
12
11
10
09
08
07
06
05
04
03
02
01
00
-01

Site Plan



All dimensions are taken approximately from the middle of the room (< - >). Each layout may vary. All measurements may vary within the tolerance percentage agreed. The dimensions are not intended for use for carpet/flooring sizes, appliances or furniture. Kitchen layouts indicative only and may be subject to change. Specification and finishes are subject to change if materials and appliances are discontinued or not readily available. Please ask Sales Consultant for further information.

APARTMENTS

Specification

FLOORING

- Laminate wood flooring in kitchen, living area and hallway
- Carpets fitted in bedrooms
- Tiling to bathroom and en-suites

KITCHENS

- Kitchen cabinets
- Glass splashback
- Induction hob
- Stainless steel single oven
- Integrated fridge / freezer
- Extractor
- Integrated dishwasher
- Freestanding washer dryer
- Chrome taps and sink

BATHROOM

- Vanity unit
- Full size LED strip light mirror
- Floor mounted concealed cistern with control plate
- Basin and tap
- Bath, bath screen and shower, control valve
- Heated towel rail
- Toilet roll holder

ELECTRICAL

- Wall mounted electric panel heaters
- Integrated tv / reception system
- Access control
- Recessed lighting
- Fire alarm



SPACIOUS ONE, TWO & THREE BEDROOM APARTMENTS, DUPLEXES AND PENTHOUSES



BRIGHT & SPACIOUS LIVING SPACES



STYLISH KITCHEN WITH INDUCTION HOB

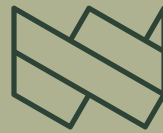


HIGH SPEC BATHROOM

IRWELL HOUSE







WATERHOUSE GARDENS

Salboy International Ltd on behalf of Waterhouse Gardens gives notice to anyone who may read these particulars as follows: 1. These particulars are prepared for the guidance only of prospective purchasers. They are intended to give a fair overall description of the property but are not intended to constitute part of an offer or contract. 2. Any information contained herein (whether in the text, plans or photographs) is given in good faith but should not be relied upon as being a statement or representation of fact. 3. Nothing in these particulars shall be deemed to be a statement that the property is in good condition or otherwise nor that any services or facilities are in good working order. 4. The photographs appearing in this brochure show only certain parts and aspects of the property at the time when the photographs were taken. Certain aspects may have changed since the photographs were taken and it should not be assumed that the property remains precisely as displayed in the photographs. Furthermore no assumptions should be made in respect of parts of the property which are not shown in the photographs. 5. Any areas, measurements or distances referred to herein are approximate only. 6. Where there is reference in these particulars to the fact that alterations have been carried out or that a particular use is made of any part of the property this is not intended to be a statement that any necessary planning, building regulations or other consents have been obtained and these matters must be verified by any intending purchaser. 7. Descriptions of a property are inevitably subjective and the descriptions contained herein are used in good faith as an opinion and not by way of statement of fact. Published August 2023, Salboy.co.uk. 8 All images used are for illustrative purposes only. These and the dimensions given are illustrative for this house type and individual properties may differ, in particular, final elevations of the property purchased may differ from those shown.